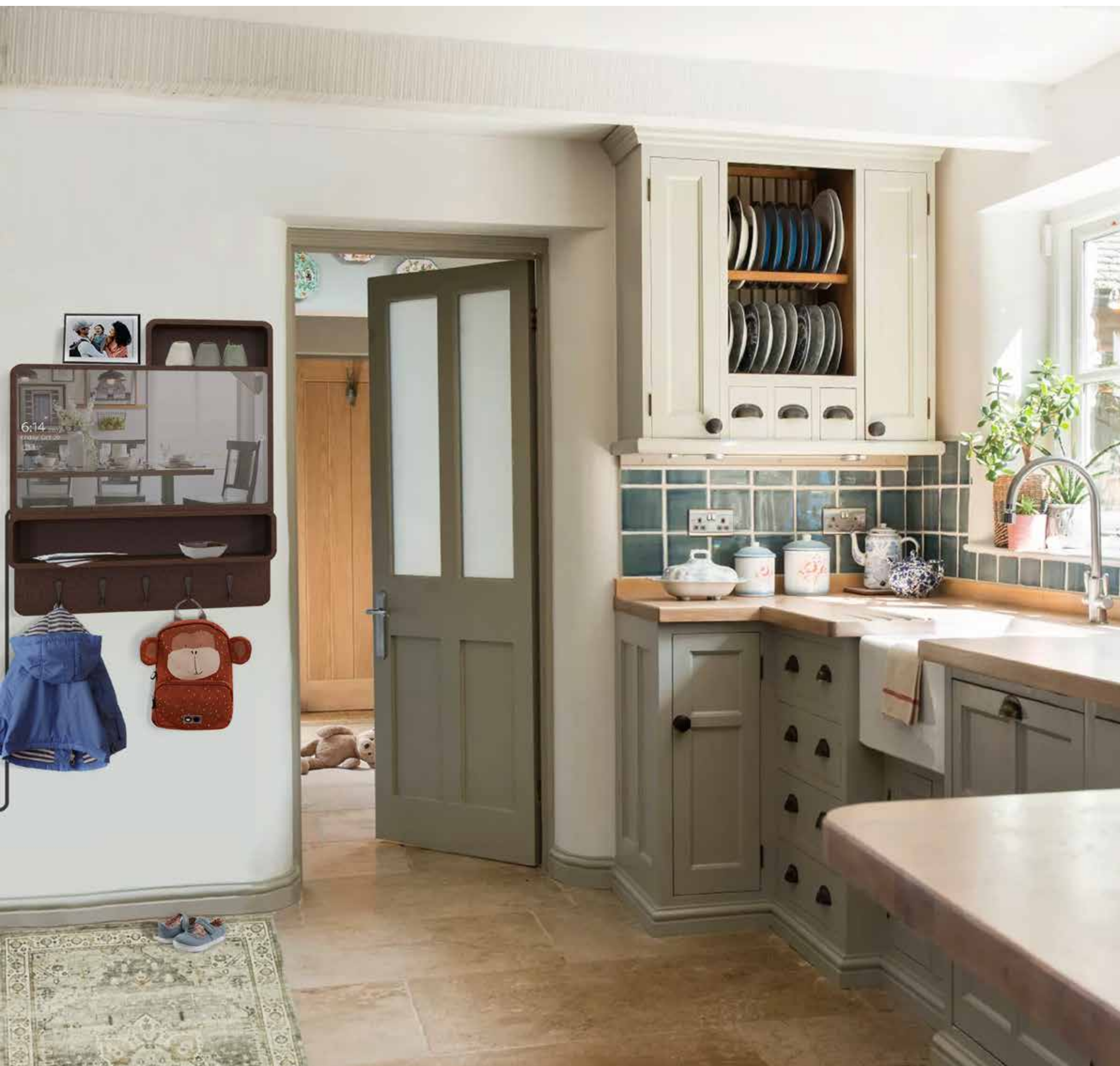




# MINDFUL MIRROR

An entryway product to help the aging population stay organized.

# ORGANIZED. CENTRAL. SIMPLE.



The Mindful Mirror is the mirror that doesn't let you forget the big things so you can keep enjoying the little things. It is a **centralized entryway unit** that includes shelves, hooks, and a **mirrored, digital touchscreen display** of a calendar, to-do list, daily and weekly weather, and **reminders and notifications**.

The Mindful Mirror is an excellent addition to any household, whether that be of an independent, family, or someone who may need additional assistance throughout the day.



# BACKGROUND

We discussed with and received feedback from Warm Hearth Village residents as well as worked with SFCS Arch mentors to help create our final products. After many conversations with residents, my group found a common theme was *memory loss* and *forgetfulness*.

5.4

million adults in the United States are diagnosed with Alzheimer's Disease



40%

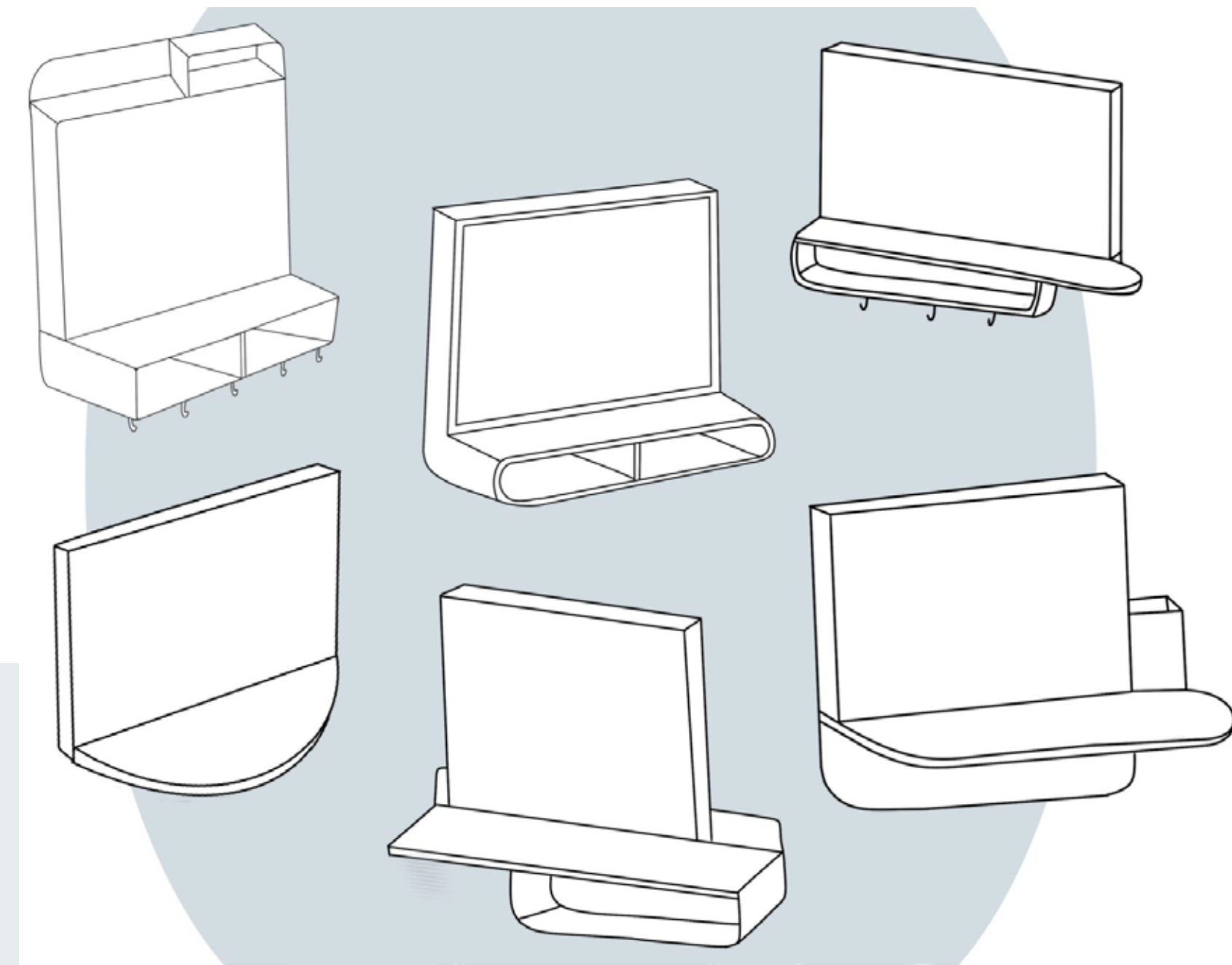
of adults over the age of 65 have memory impairment associated with age

This led us to our problem statement to guide our ideation:

**How can we assist seniors in their daily organization and awareness of events, tasks, & items using technology?**



# FORM INSPIRATION



rounded rectangular form

minimal and simple

hooks, shelves, and mirror



# FEATURES

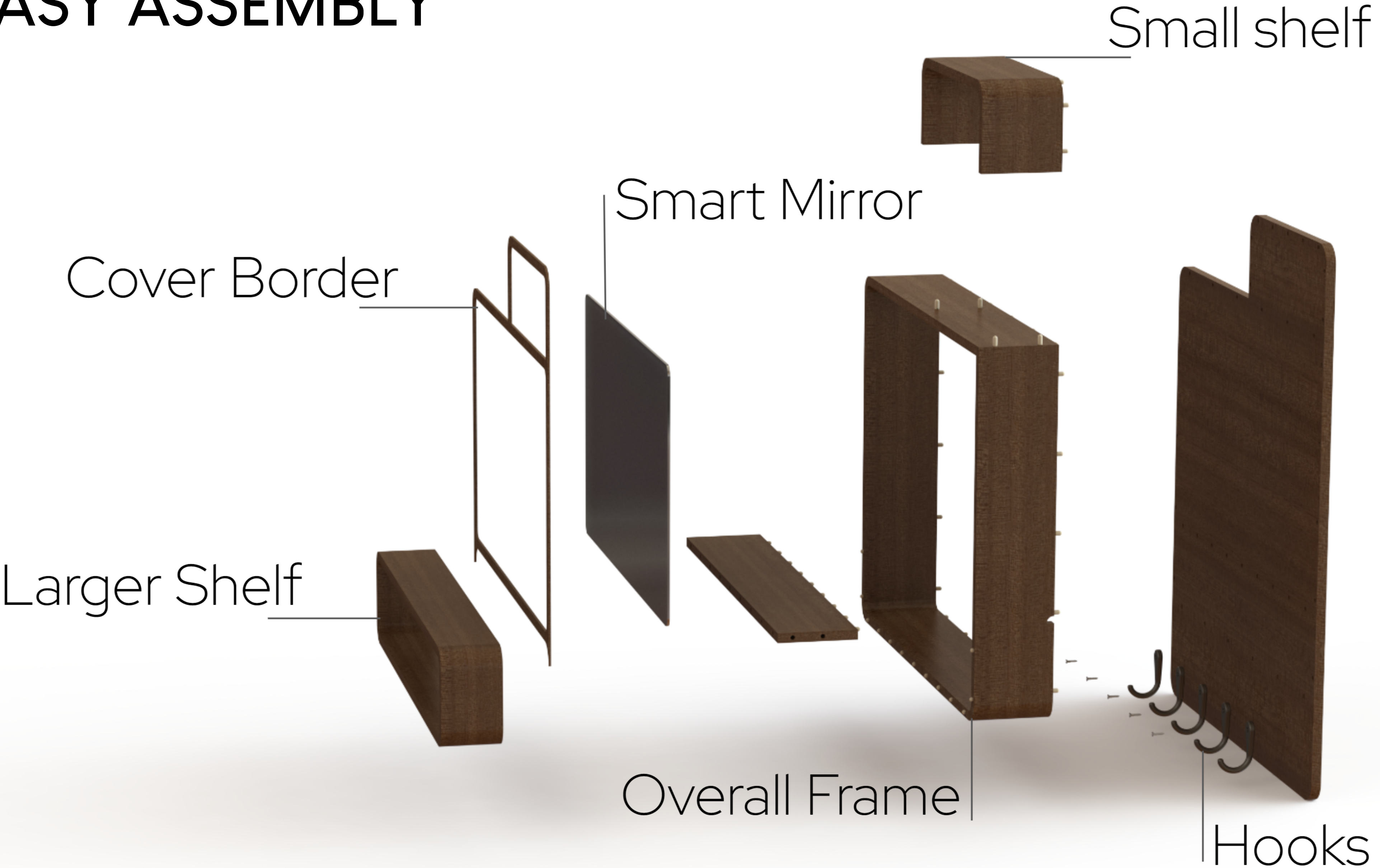
ample shelfspace for daily essentials

convenient smart mirror

multiple hooks for hanging bags, coats, etc

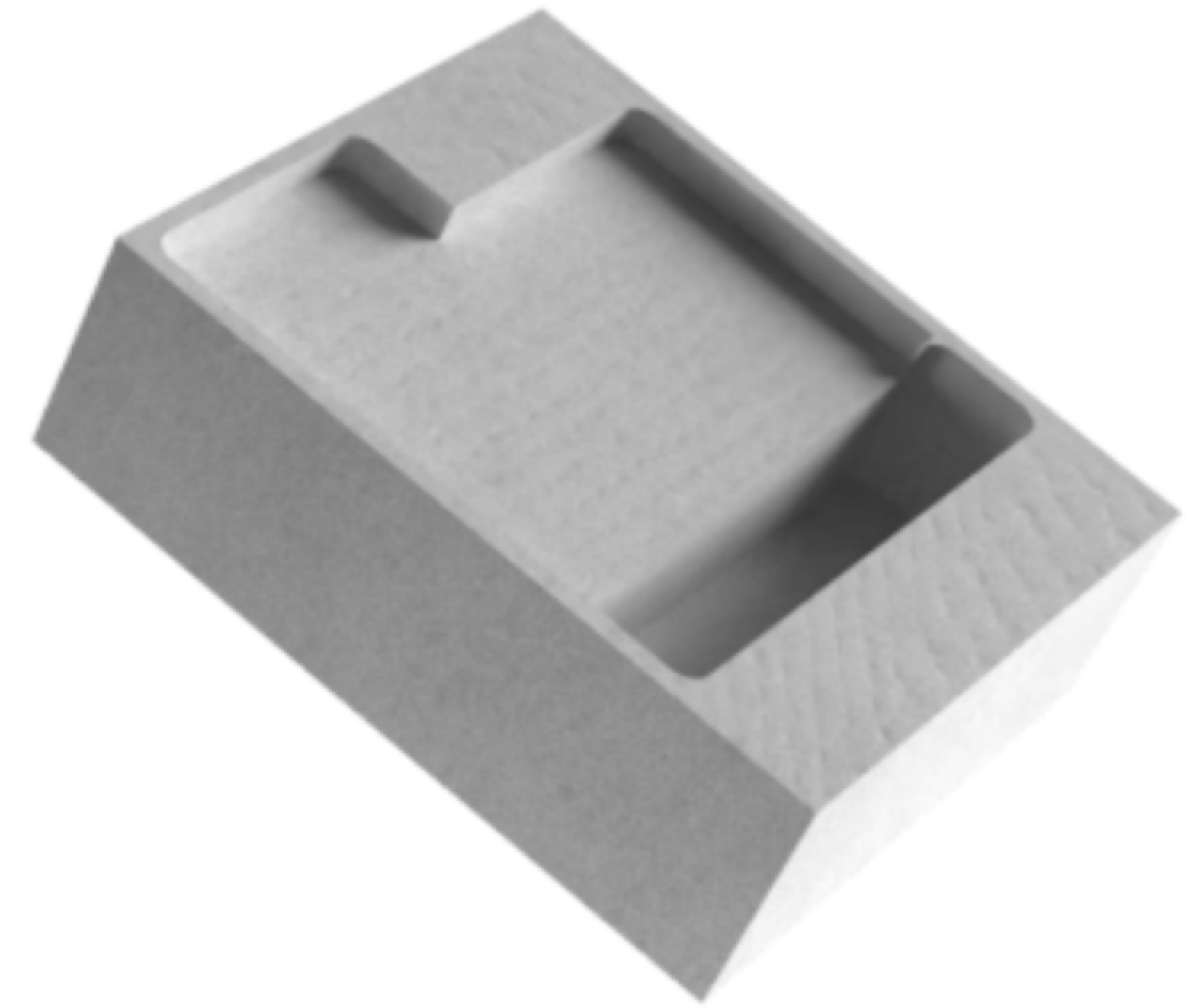


# EASY ASSEMBLY





# PACKAGING



Packaged with **biodegradable tape**, a **cardboard box**, and insulated with a **molded biopolymer foam**, packaging for Mindful Mirror is completely sustainable and will ensure that the product is delivered without any damages. Our molded foam also has easy-grab handles to make the unboxing process less strenuous.

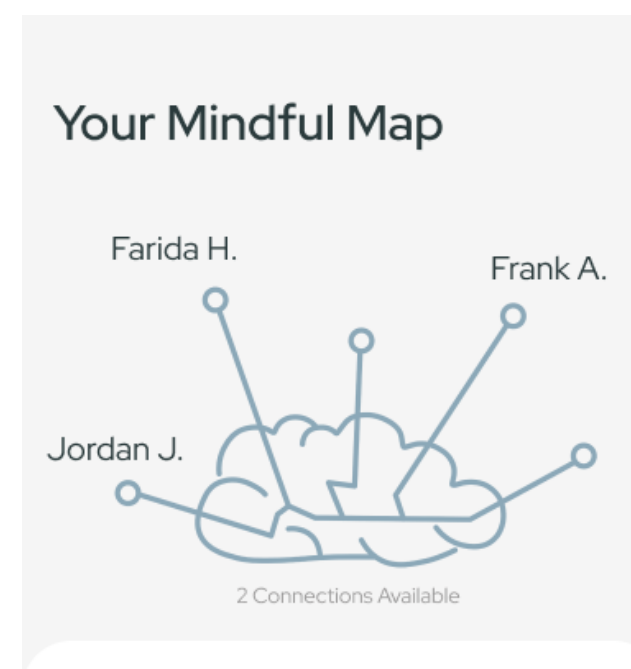
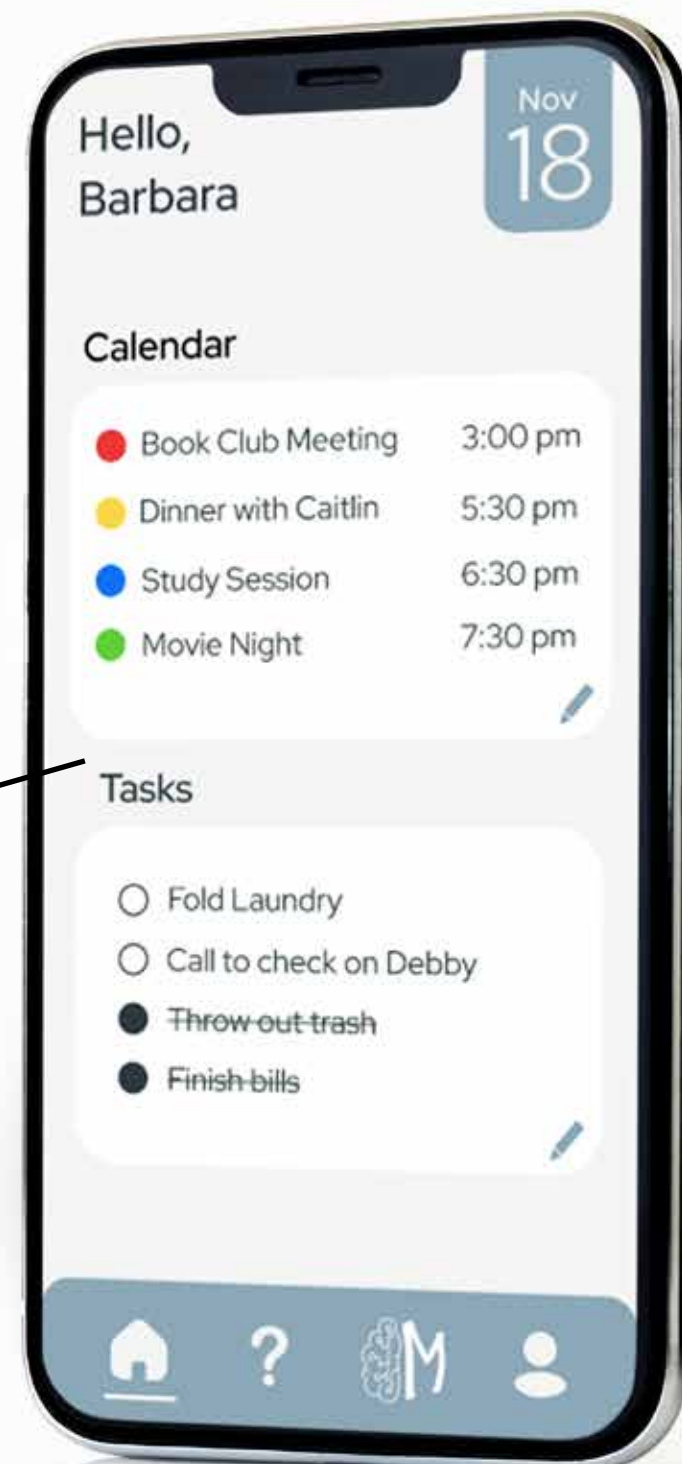


# THE MINDFUL APP

The Mindful App is an *accompanying app for mobile devices* that allows the owner and approved relatives, guardians, or caregivers to add and edit events or tasks to their mirror from anywhere.



add/edit events & tasks



## Connections

Frank Alfano  
iPhone  
Laptop

Jordan Jones  
InSync  
Galaxy Phone

Farida Hanna  
Phone

Edit your InSync

ON

OFF

ON

view/edit mindful map



adjust mirror settings



# PROTOTYPE + TESTING

Our physical prototype was made from wood, a raspberry pi to code in the figma interface prototype, an infrared touchframe to allow for functionality, a computer monitor, and a two-way acrylic sheet to create the smart mirror.



recieved feedback about  
shelving sizes and placements



we felt our prototype was too  
square, edited final design to  
have larger fillets



increased overall size





# MINDFUL MIRROR

